

EXPLORE, EXPERIENCE, ENJOY: SPACES AND TECHNOLOGY TO ENGAGE ALL VISITORS



"In a choose-your-own-adventure world, can technology and the built environment be used to engage visitors in a personalized way?"

Amanda Dunyak Gillen

Director of Education, Frick Art & Historical Center
Pittsburgh, PA

Steve Bromage

Executive Director, Maine Historical Society
Portland, ME

Gabe Kean

Founder and Principal, Belle & Wissell Co.
Interactive Design and Wayfinding
Seattle, WA

Jonathan Traficonte, AIA

Principal, Schwartz/Silver Architects and Planners
Boston, MA



Institutional Similarities:

Maine Historical Society, Portland, ME

Frick Art & Historical Center, Pittsburgh, PA

Built Environments:

- Located in or near urban centers
- Multiple buildings with different architectural styles
- Historic house museums

Use of Technology:

- Institutional agendas that reach beyond the walls of their campuses
- Engage visitors



Maine Historical Society

- 200 year old organization



Henry Wadsworth Longfellow House

- House Museum since 1901



Brown Research Library

- Built in 1907
- Renovated and expanded in 2009



MHS Museum

- Purchased in 1992
- Changing exhibits
- Public programs
- School programs



MHS Museum

- Multiple uses and building renovations



Aerial View of Campus





2008 Master Plan Images & Phase #1 Research Library Addition





MMN: digital museum that provides access to items from over 270 Museums, Historical Societies, and Libraries



Research Library Addition & Longfellow Garden



Henry Wadsworth Longfellow House

- House Museum since 1901



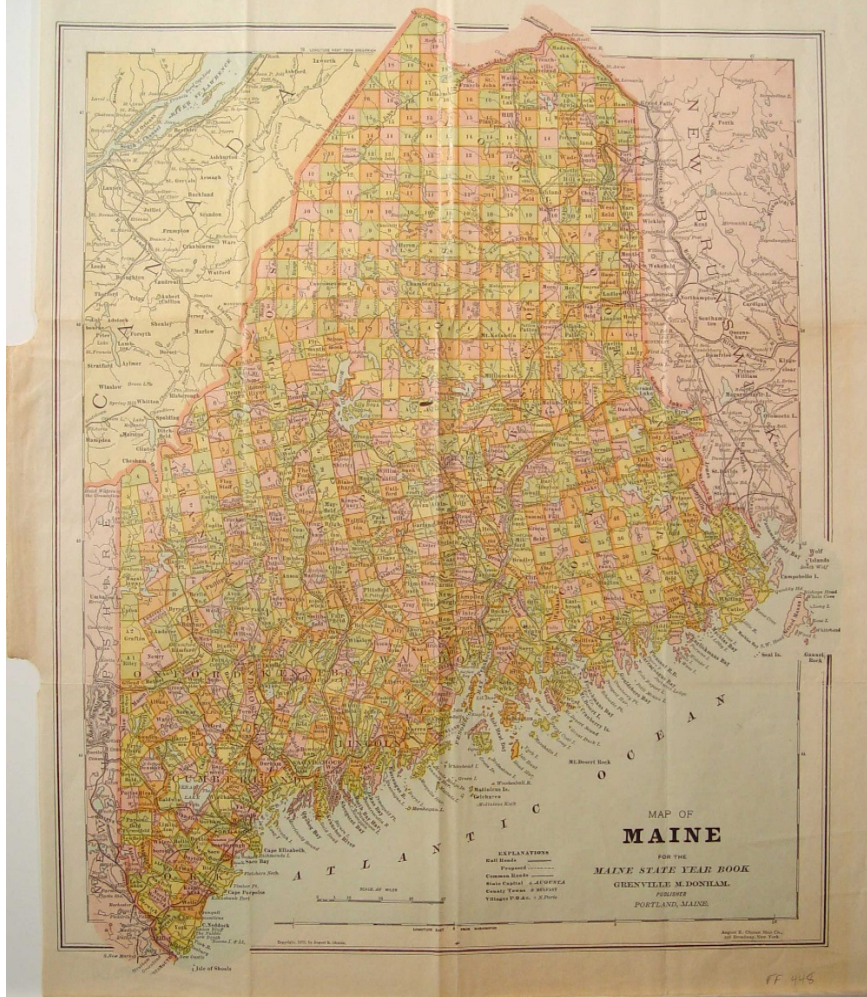
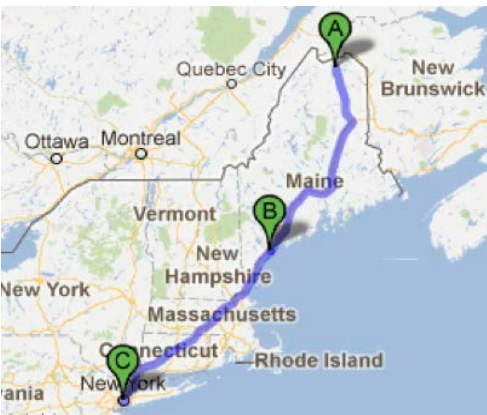
MHS Museum

- Changing exhibits
- Public programs
- School programs
- Lecture Series



Geography

- Portland to Ft. Kent, Maine: 342 Miles
- Portland to NYC: 325 Miles



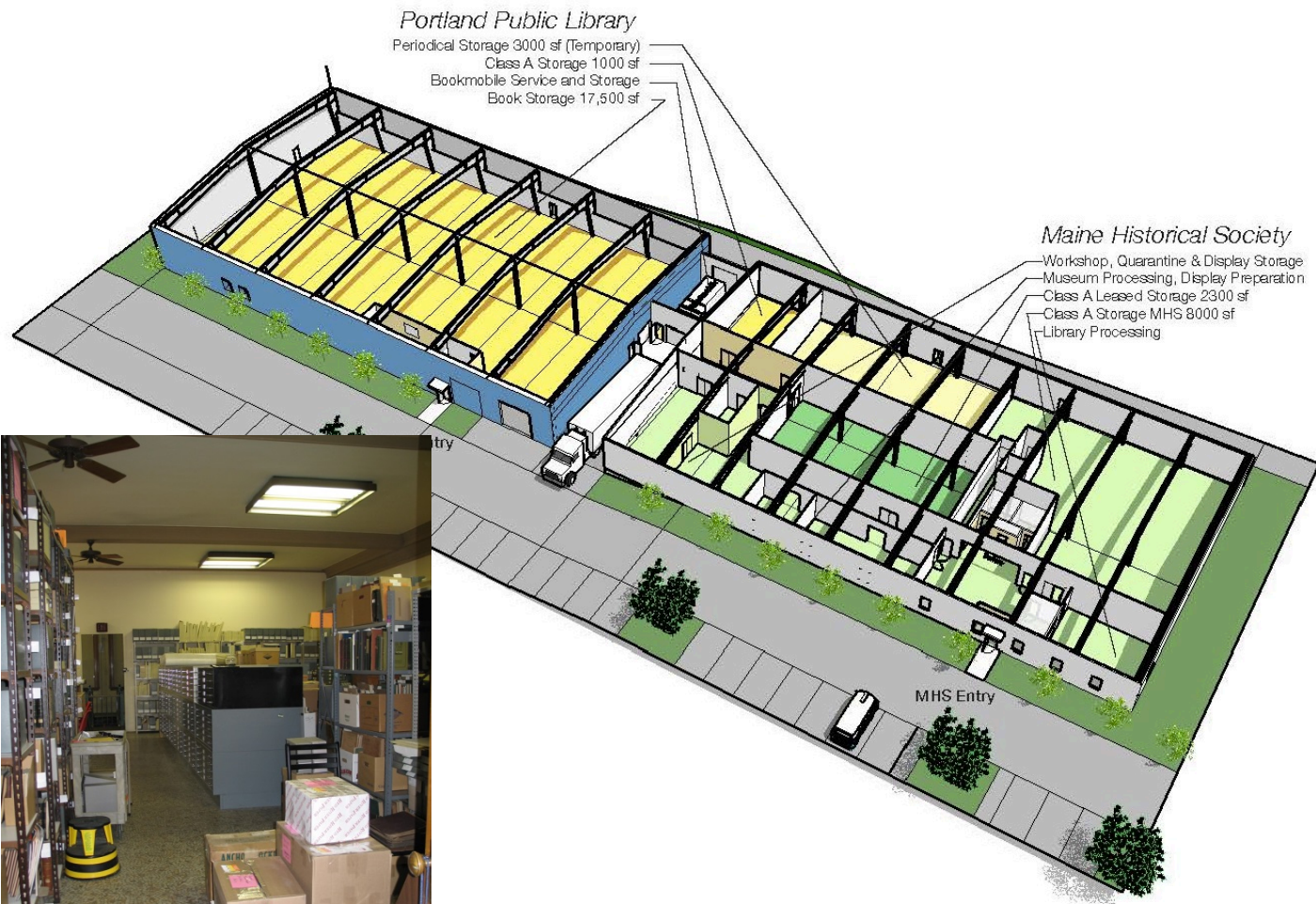
Maine Memory Network

- www.mainememory.net
- Launched 2001
- 270 contributing organizations
- 60,000 historical items
- 100+ online exhibits
- Intro to Maine history
- Much more!



Offsite Collections Management Facility

- Jointly developed, designed, funded, and run by MHS and Portland Public Library
- 17,500 sq. ft. of collections processing and storage moved offsite
- Game changer for campus: immediately frees space, creates prime real estate, helps reimagine campus



1000 Riverside Street

Brown Research Library

- Multi-use spaces



What's Next?



Frick Campus Map



Clayton, home of the Henry Clay Frick Family

- House Museum since 1990



Clayton, home of the Henry Clay Frick Family



The Frick Art Museum



The Frick Art Museum



Car and Carriage Museum



New Car and Carriage Museum



Existing Aerial View

- Campus Entry



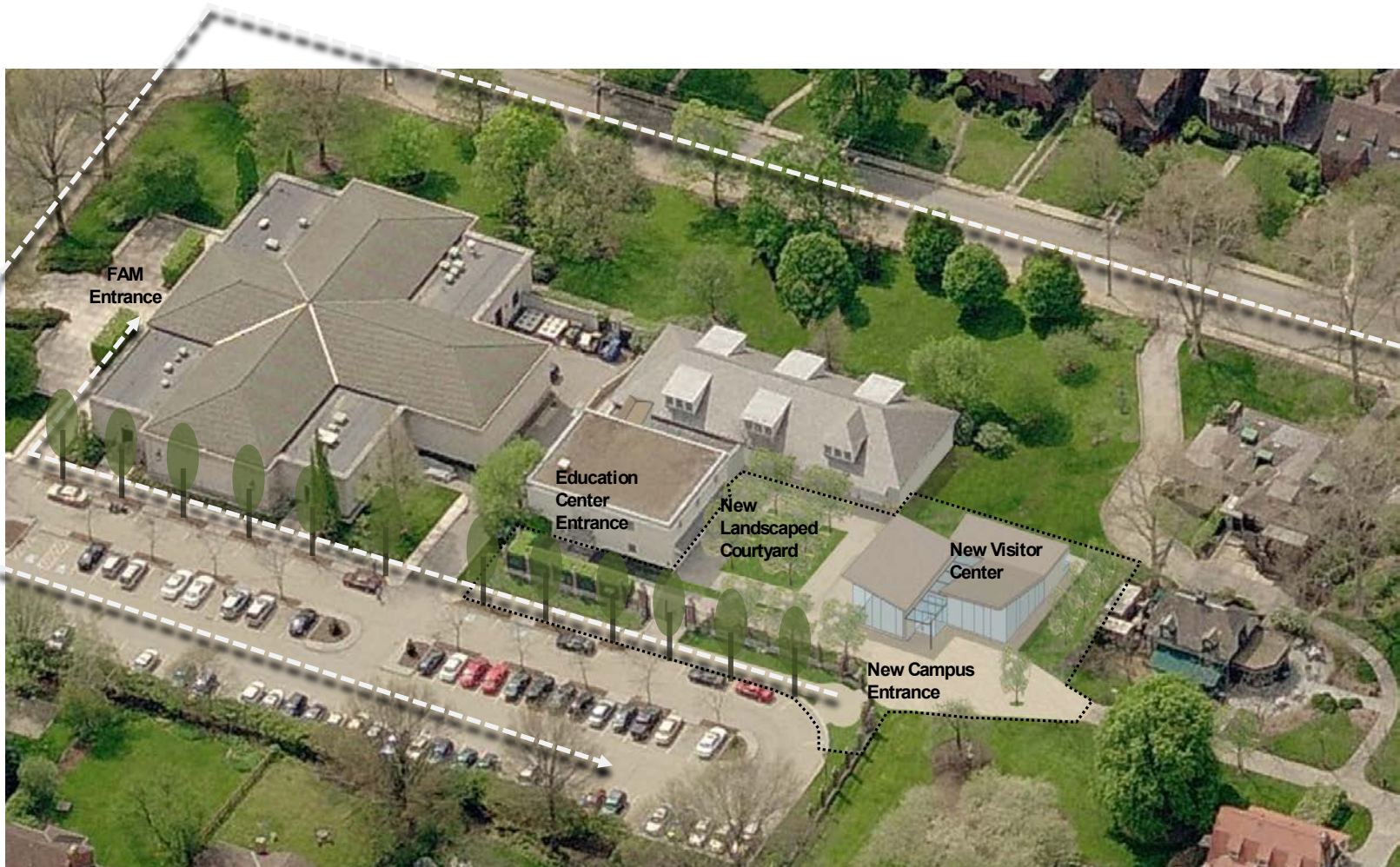


Entry to the Frick 2013

Phase #1

Orientation Center

Site
Approach
&
Signage



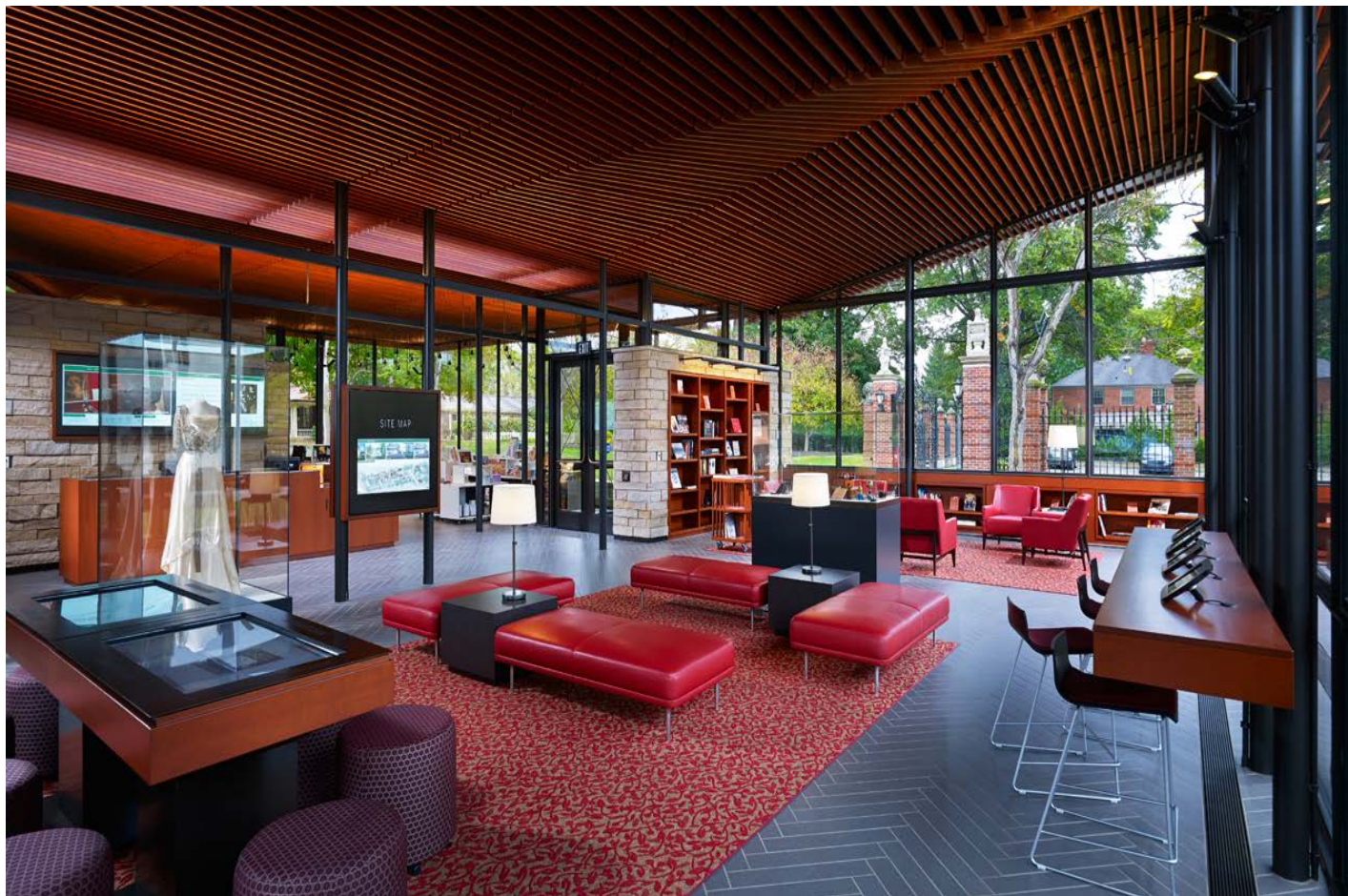
Visitor Center



Visitor Center



Visitor Center





EXHIBITIONS

Three Centuries of Printmaking featuring prints from the permanent collection and The Prints of Jacques Callot

10am–5pm at The Frick Art Museum

Three Centuries of Printmaking featuring prints from the permanent collection and The Prints of Jacques Callot

10am–5pm at The Frick Art Museum

Riding and Gliding with the Air-cooled Franklin

10am–5pm at The Car & Carriage Museum

Growing Up at Clayton: Summertime hands-on tours for the whole family

11:15am at Clayton – SOLD OUT

Family Program: Croquet and Cracker Jack

6pm–8pm at Clayton Lawn

Active U.S. Military and Family Members are invited to join Clayton Tours for FREE!

All Summer at The Orientation Center

HISTORIC TOURS OF CLAYTON

Tours occur throughout the day;
ask when the next tour departs.

Frick
Members
FREE

General
Admission
\$12

Children
16 AND UNDER
\$6

Seniors and
Students
\$10

Active
U.S. Military
\$10

ADMISSION TO OTHER VENUES

FREE

The Frick Art Museum, The Car and Carriage Museum,
The Greenhouse, and The Grounds.



The Greenhouse

BECOME A MEMBER TODAY

Free Clayton tours as well as a 10% discount in the Museum Shop, discounts on programs, invitations to Exhibition Openings and more.

Individual
\$55
ONE ADULT

Family
\$75
TWO ADULTS
AND KIDS

Fellow
\$125

Patron
\$250

Benefactor
\$500

Teacher
\$55

Senior
\$30

Student
\$15

Touch Table



Collection Highlights

Traveling in Style

Victorian Eclecticism

CREDITS

An Evening Out



Charlotte-Marguerite de Condé
Montmorency, Princess of Condé

Portraits and Personalities: 4 of 12

Overview
Read More
Where Is It?
Help

Portraits and Personalities

From Morgan to Frick

The Natural World

Collection Highlights

Traveling in Style

Victorian Eclecticism

[Overview](#)
[Read More](#)
[Where Is It?](#)
[Help](#)

Not on view.



Portraits and Personalities

An Evening Out

AN EVENING OUT: 1 OF 8

Penn 30 Touring Car, 1911

Penn Motor Car Company, Pittsburgh, Pennsylvania

After 1900, the most popular vehicles were those that looked the least like horse-drawn carriages. The new front-engine vehicles were often compared to train locomotives. Given the railroad boom that took place in the United States in the late 1800s, it is easy to understand why the automobile like the train, was equated with progress. In keeping with the touring car tradition, the body of the vehicle is large and long. This Penn 30 is from the middle of the touring car era, and has local origins. It was built by the Penn Motor ar Company, not far from the Frick.

[Overview](#)
[Read More](#)
[Where Is It?](#)
[Help](#)

CREDITS

The Natural World

From Morgan to Frick

Tablet Bar



INTERNATIONAL STORIES

Electric, Steamer and
Internal Combustion Cars

ONE STORY >

KEY EVENT

First Nobel
Prizes Awarded

ONE STORY >

Introduction to 18th
Century French Art

ONE STORY >



It

UNITED STATES STORIES

Immigration and
Domestic Service

ONE STORY >

KEY EVENT

Gold Standard
Act is passed

ONE STORY >

Transportation
and Society

FOUR STORIES >

Automobili
and Adverti

FOUR STORIES >

PITTSBURGH STORIES

d Age Pittsburgh
restige of Wealth

ONE STORY >

Pittsburgh as Central
to Industrial America

ONE STORY >

Gilded Age Industrialists
and Titans of Industry

FIVE STORIES >



FRICK STORIES

rick Family Members
Biographies

SIX STORIES >

Evolution of Site from
1882 to Present

ONE STORY >

Clayton's Household
Staff Biographies

FIVE STORIES >



1880 THROUGH 1990

Timeline

Story Index

HOUSEHOLD STAFF

The household staff at Clayton ranged in size over the years, but generally consisted of a butler (who also served as Mr. Frick's valet), chef, maids, lady's maid, and a governess for Helen Clay Frick. Many records pertaining to members of the staff have survived, giving us information the people who worked in Clayton and the responsibilities they held.

Work at Clayton was often shared by staff members—for example, maids were not designated as parlor maid and chamber maids, but instead likely shared responsibilities throughout the house.

After the Frick family moved to New York in 1905 they both increased the size of their domestic staff and identified both titles and job responsibilities in a more defined way. The household staff at Clayton ranged in size over the years, but generally consisted of a butler (who also served as Mr. Frick's valet), chef, maids,

[Continue Reading](#)

Mary Coyne, maid and then housekeeper at Clayton

FRICK,
 1000 AVENUE,
 PITTSBURGH, PENN'A.

To **M. M. Bosworth,**
 Pittsburgh, Pa.

For amount to cover Pay Roll at "Clayton" for
 month of June, 1897,

Household Wages --	Miss Grossmann	\$50 00	
	Spencer A. Ford	40 00	
	Pauline Turon	25 00	
	Marie Johnston	25 00	
	Hollie Hett	17 75	
	Mary Coyne	17 75	
	Bridget Conroy	17 75	
Stable Wages --	James Elmore	\$30.00	
	Sam'l Bowles' Board	18.00	
	Sam'l Bowles	75 00	
		30 00	
Garden, Grounds &c.	George Doerr	80 00	
	Frank Hasslinger	40 00	\$300 25

June 1897 staff payroll record for Clayton.

THE FRICK COLLECTION/FRICK ART REFERENCE LIBRARY ARCHIVES

H. C. FRICK,
 FRICK BUILDING,
 P.O. Box 190,
 PITTSBURGH, PENN'A.

To Pay Roll at Clayton for month
 of December 1902.

D.

1902	Household	Milo. Agis	100	
1902		Joe. Holroyd	30	
		Samuel A. Ford	40	
		P. Johnson	40	
		Simon Slosser	25	
		Hollie Impton	25	
		Mary Coyne	25	
	Garden	David Prager	80	
		David Kennedy, 20 ds. @ \$1.	20	330
		John McCall	45	
		James Perry	45	
		Edw. Westinghouse	45	
	Stable	H. Penny, 11 ds. @ \$1.50	16 50	287 50
		James Elmore	30	
		Board for 2 men @ \$10.	20	
		Joe. Holroyd	30	
	Chafffour	Sam. Talton	35	105
		George Decker	125	
		Antonio Dominick	45	370
				682 50

Approved, _____ Sent, _____

Received, _____, 1902, of H. C. FRICK,
 One hundred, eighty two, and _____ 20 Dollars,
 in full for the above account. \$682.50

DO NOT DETACH PAPERS.

December 1902 staff payroll record for Clayton. A comparison of these two payroll documents shows that many of the same people remained on the payroll at Clayton five years later.

THE FRICK COLLECTION/FRICK ART REFERENCE LIBRARY ARCHIVES

Interactive Campus Map





Home Of Henry Clay Frick



The Frick Art Museum



The Café at the Frick



Playhouse



Car & C

TOUCH A BUILDING BELOW TO LEARN MORE ABOUT IT





Clayton

Built in 1882

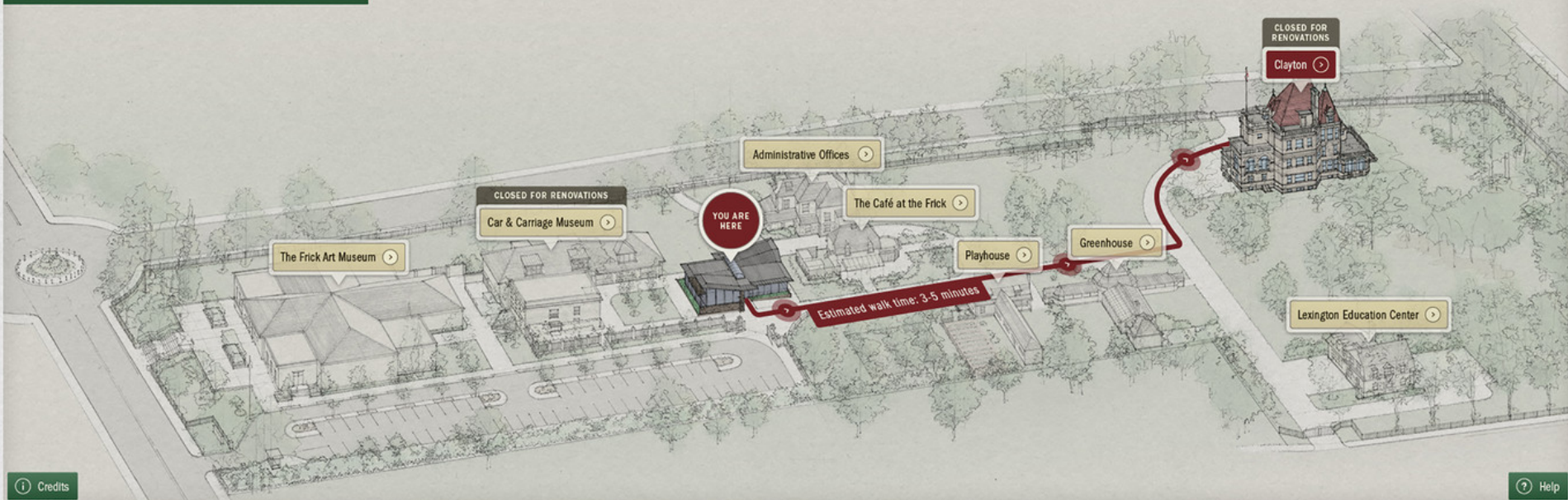
After returning from their wedding trip, the Fricks purchased "Homewood," an eleven-room, Italianate-style home located at the corner of Penn and South Homewood avenues in Pittsburgh's residential East End neighborhood. Pittsburgh architect Frederick Osterling made interior and exterior modifications to the home, which was renamed "Clayton."

CLOSED FOR RENOVATIONS
RE-OPENING MAY 2024



The Frick Art Museum

TOUCH A BUILDING BELOW TO LEARN MORE ABOUT IT



EXPLORE, EXPERIENCE, ENJOY: SPACES AND TECHNOLOGY TO ENGAGE ALL VISITORS



So, can technology and the built environment engage visitors in a personalized way and enhance their visitor experience?







EXPLORE, EXPERIENCE, ENJOY:
SPACES AND TECHNOLOGY TO ENGAGE ALL VISITORS



Q & A